

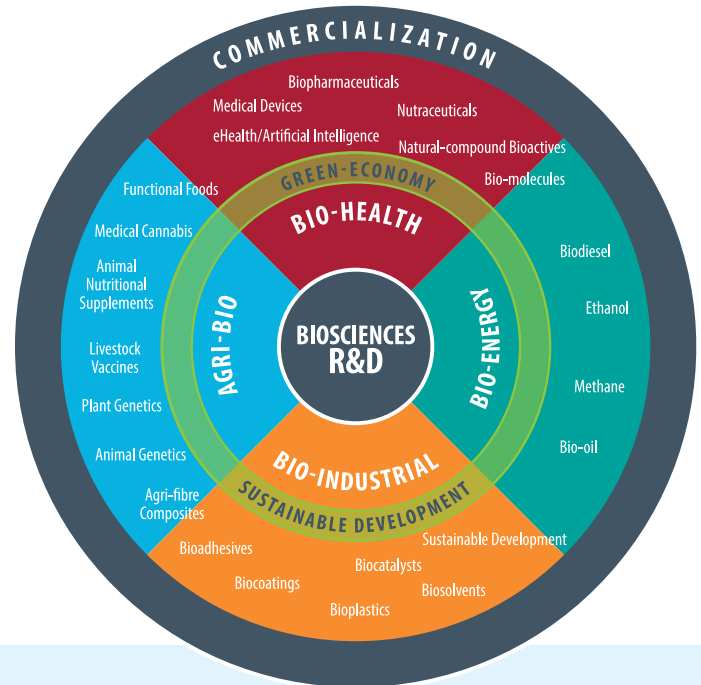
# DRIVING THE POTENTIAL

BioTalent Canada's biosciences and healthcare student work placement achievements

## Economic driver

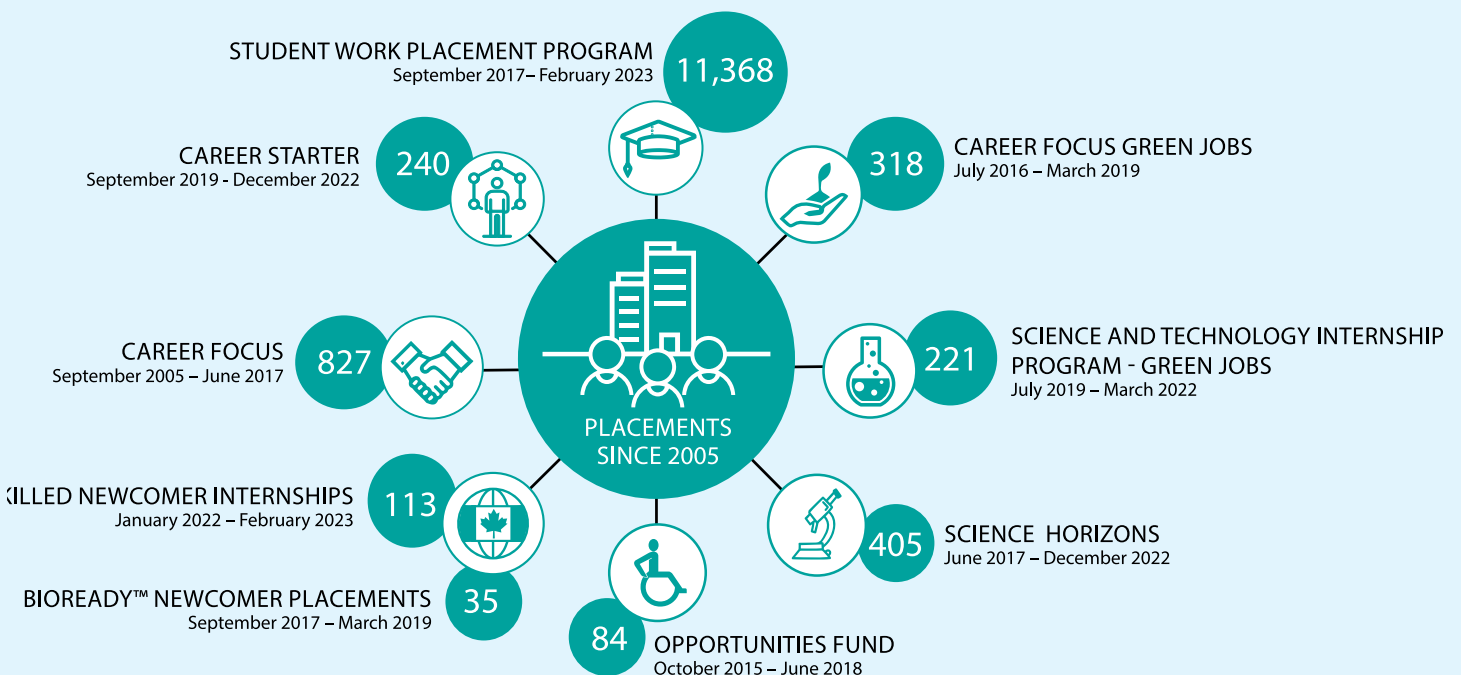
The bio-economy is defined as the economic activity associated with the invention, development, production and use of primarily bio-based products, bio-based production processes and/or biotechnology-based intellectual property. It includes the use of resources from agriculture, forestry, fisheries/aquaculture, organic waste and aquatic biomass.

BioTalent Canada supports the people behind life-changing science. Trusted as the go-to source for labour market intelligence, BioTalent Canada guides bio-economy stakeholders with evidence-based data and industry-driven standards. BioTalent Canada is focused on igniting the industry's brainpower bridging the gap between job-ready talent and employers and ensuring the long-term agility, resiliency, and sustainability of one of Canada's most vital sectors.



## Wage subsidy track record

Growth in wage subsidy placements and programs reflect employer demand in addition to opportunities to develop and employ talent. The figure below captures the success of the full scope of BioTalent Canada programs that deliver results for Canadians, fueled by funding from the Government of Canada's Student Work Placement Program.



# Student Work Placement Program (SWPP) 2017-2013 at-a-glance\*



**11,368**  
placements



## Student and post-secondary institutions participation

**10,242**  
University students

**1,119**  
College,  
polytechnic,  
and Cégep students

**251**  
Universities and  
departments

**89**  
Colleges

**16**  
Polytechnique



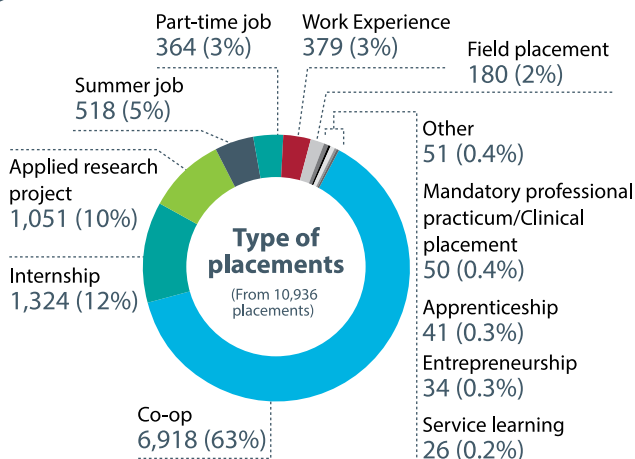
## Participant Engagement



**22 years**  
Average Age



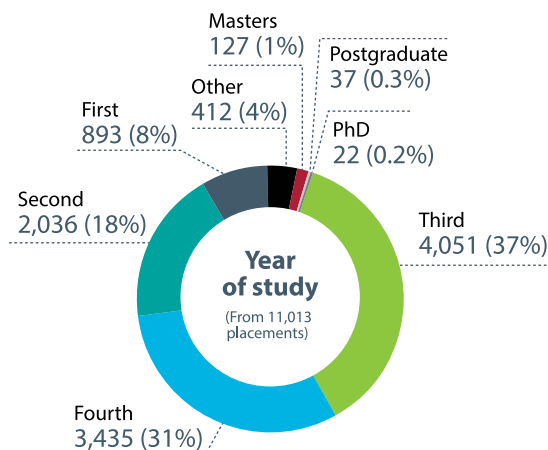
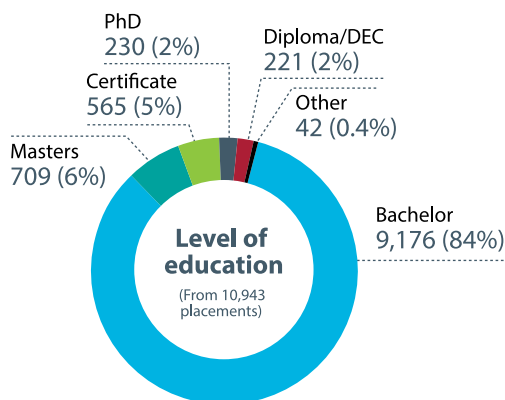
**\$35,315/year**  
Average Salary



**97%**

Were satisfied with the overall experience.

Felt they were better positioned to secure employment in their field.



### \* NOTES

- Student Work Placement Program participant applications as of February 15, 2023, BioTalent Canada
- Not all placements are reflected in the data, as some fields were not yet mandatory at the time of placement
- Charts may not add up to 100% due to rounding



## 76% of participants were from under-represented groups

### Participants by gender

**6,231**

Females

**51**

Declined to answer

**4,261**

Males

**4**

Other

### Participants by under-represented group

**227**

New immigrants

**346**

Self-identified disability

**4,767**

Visible Minorities

**90**

Self-identified Indigenous Group

**13**

LGBTQ2+



## Employer Engagement

**2,157**

Employers

**99%**

Satisfaction

**5 placements**

Average per employer

**98%**

Would participate again

**96%**

Would continue the collaborative relationship with the post-secondary institution

### Would the co-op position have been created without the SWPP subsidy?

3,075 (30%)

No, it would not have been created

2,086 (20%)

Yes, it would have been created anyway

828 (8%)

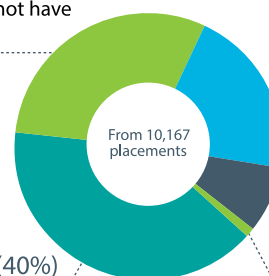
Subsidy allowed additional placements, finances or resources

89 (1%)

N/A

4,089 (40%)

Not sure



### Placements by industry

**3,704**

Healthcare

**7,157**

Bio-economy

### Placements by bio-economy sub-sector†

6,864 (71%)

Bio-health

803 (8%)

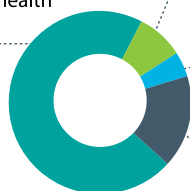
Bio-industrial

408 (4%)

Bio-energy

1,578 (16%)

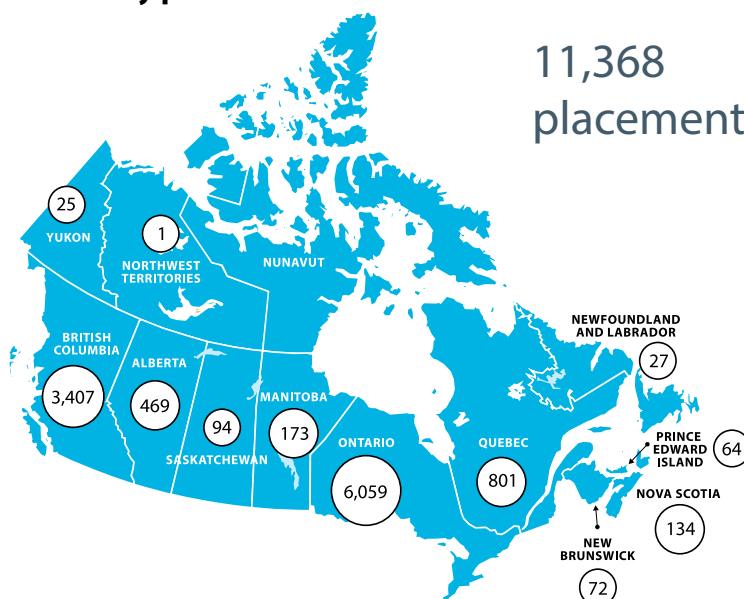
Agri-bio



† Placements may fit within multiple bio-economy sub-sectors

### Placements by province

**11,368**  
placements



# Student Work Placement program impact



"As a young medical startup, BioTalent Canada has been an essential resource when it comes to subsidizing the wages of great young talent. However, it is their availability and patience when helping us navigate government funding that really sets them apart."

– Richard Pietro, Skinopathy

"BioTalent Canada has helped SQI over the years to build strong connections with Universities in acquiring new talent and be able to address short term workflow pressures."

– Aurela Mehmeti, SQI Diagnostics Inc.

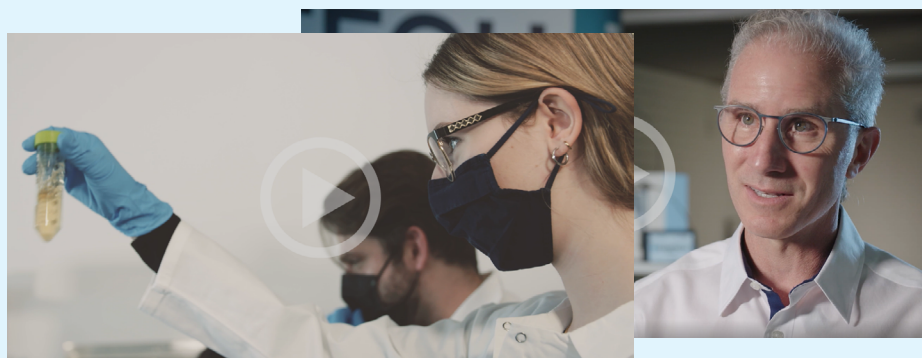
"It allowed us the opportunity to mentor, train, and encourage students interested in this industry and provide them with real world experience and exposure. It also helped us in solving technical challenges we had and bought a fresh insight whilst also adding value."

– Samra Asem, Genecis Bioindustries Inc.

"It has allowed our organization to hire fresh young talent that has helped boost our research and development department and the students bring in lots of creativity and new insights."

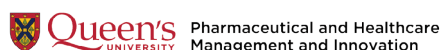
– Robert Jaam, Pathronix Corp.

Hear from students and employers themselves in our *Gaining a Competitive Edge* video series at [youtube.com/BioTalentCanada](https://youtube.com/BioTalentCanada)



## Featured academic partners

Western  hirewesternu



Students from any Canadian post-secondary institution can participate

Funded in part by the Government of Canada's Student Work Placement Program. 