

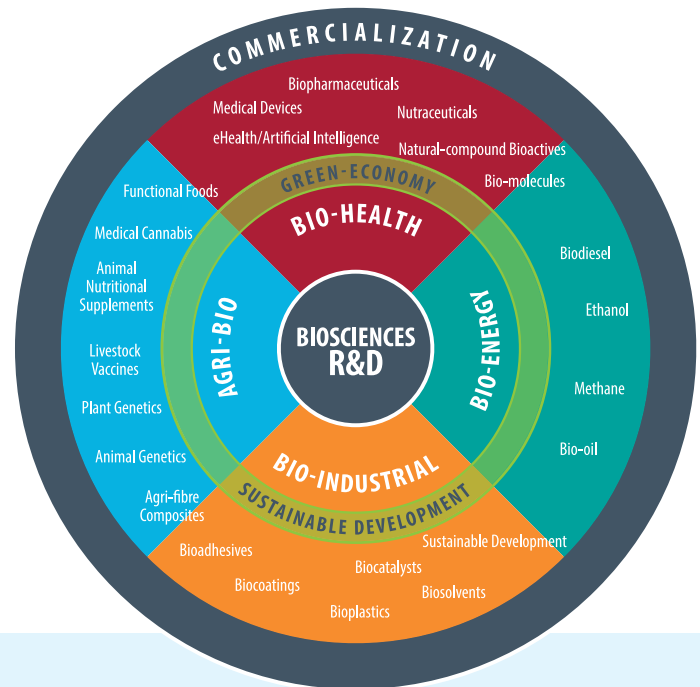
DRIVING THE POTENTIAL

BioTalent Canada's biosciences and healthcare student work placement achievements

Economic driver

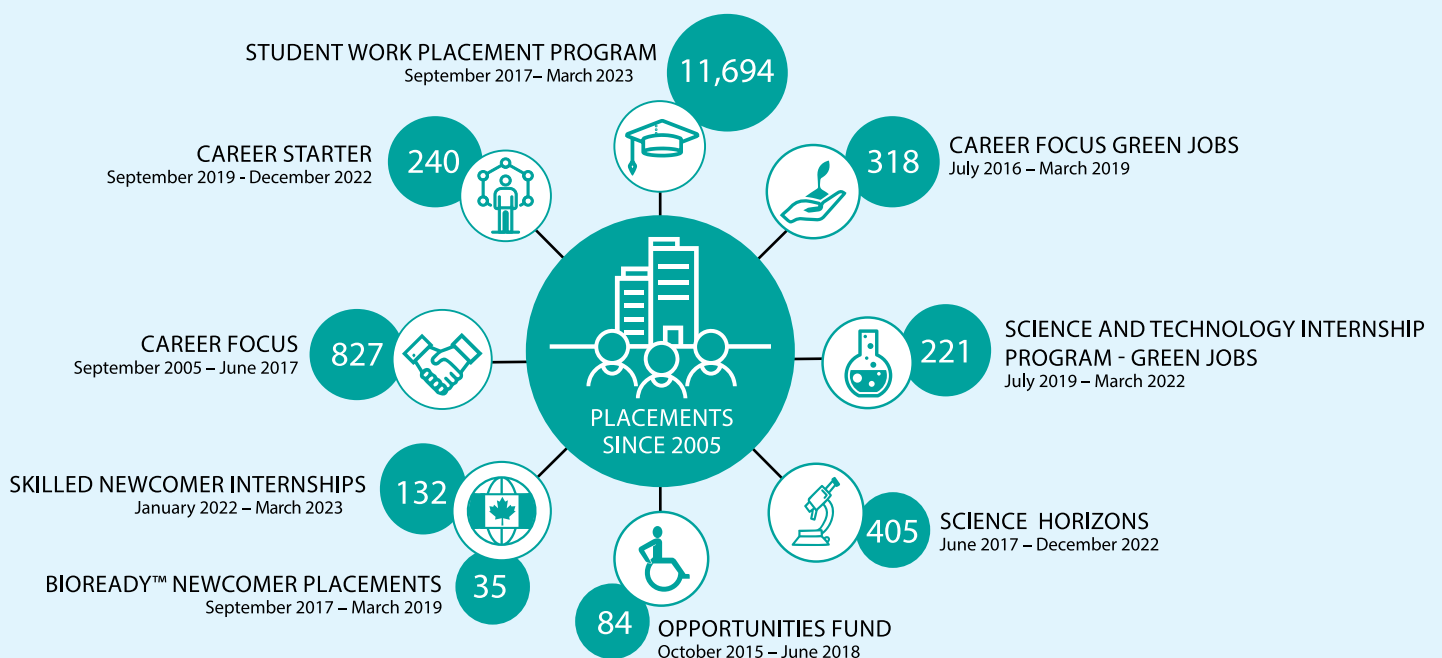
The bio-economy is defined as the economic activity associated with the invention, development, production and use of primarily bio-based products, bio-based production processes and/or biotechnology-based intellectual property. It includes the use of resources from agriculture, forestry, fisheries/aquaculture, organic waste and aquatic biomass.

BioTalent Canada supports the people behind life-changing science. Trusted as the go-to source for labour market intelligence, BioTalent Canada guides bio-economy stakeholders with evidence-based data and industry-driven standards. BioTalent Canada is focused on igniting the industry's brainpower bridging the gap between job-ready talent and employers and ensuring the long-term agility, resiliency, and sustainability of one of Canada's most vital sectors.



Wage subsidy track record

Growth in wage subsidy placements and programs reflect employer demand in addition to opportunities to develop and employ talent. The figure below captures the success of the full scope of BioTalent Canada programs that deliver results for Canadians, fueled by funding from the Government of Canada's Student Work Placement Program.



Student Work Placement Program (SWPP) 2017-2023 at-a-glance*



**11,694
placements**



Student and post-secondary institutions participation

University placements

10,546

College, polytechnic,
and Cégep
placements

1,148

Universities and
departments

252

Colleges

89

Polytechnics

16



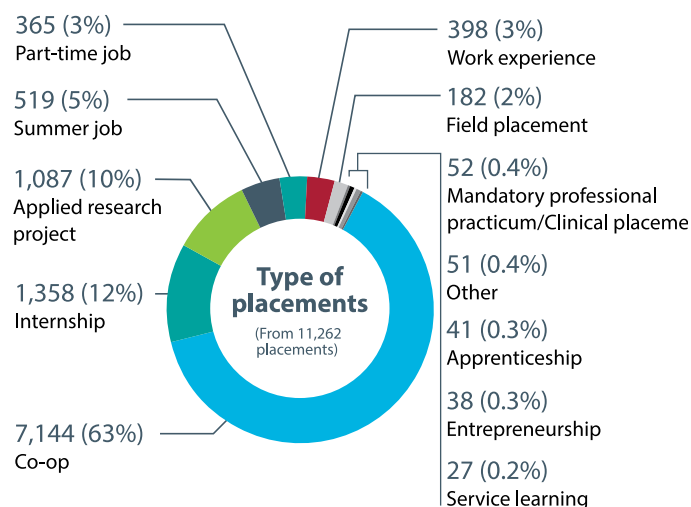
Participant Engagement



Average Age
22 years

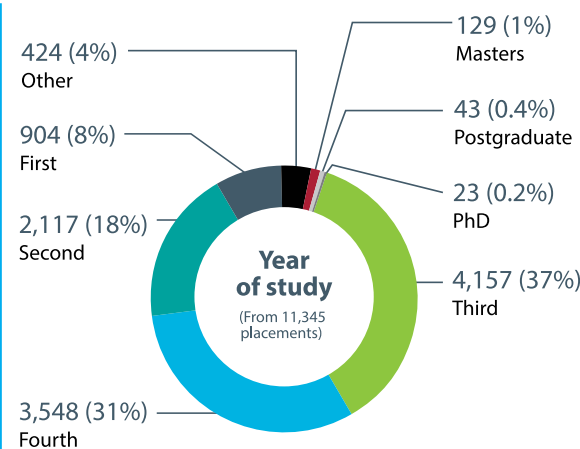
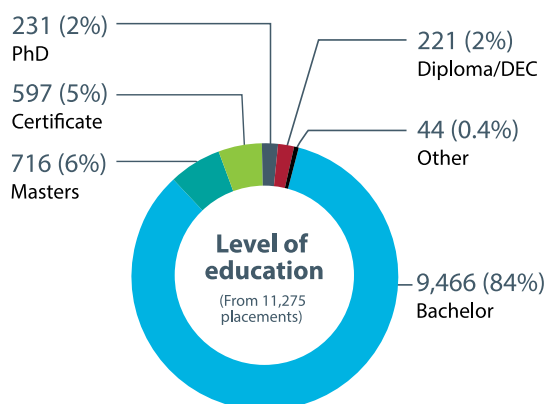


Average Salary
\$35,378/year



97%

Were satisfied with the overall experience.
Felt they were better positioned to secure employment in their field.



* NOTES

- Student Work Placement Program participant applications as of March 31, 2023, BioTalent Canada
- Not all placements are reflected in the data, as some fields were not yet mandatory at the time of placement
- Charts may not add up to 100% due to rounding



77% of participants were from under-represented groups

Participants by gender

Females	Declined to answer
6,344	59
Males	Other
4,361	4

Participants by under-represented group

New immigrants	Self-identified disability
228	363
Self-identified Indigenous Group	Visible Minorities
132	4,894



Employer Engagement

2,187

Employers

99%

Satisfaction

5 placements

Average per employer

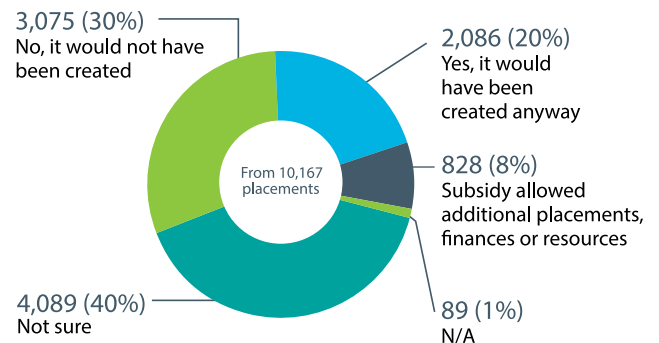
98%

Would participate again

96%

Would continue the collaborative relationship with the post-secondary institution

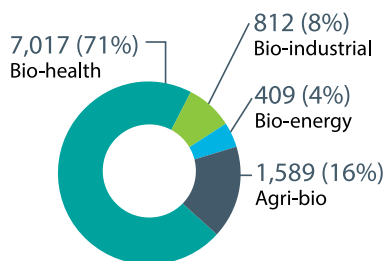
Would the co-op position have been created without the SWPP subsidy?



Placements by industry

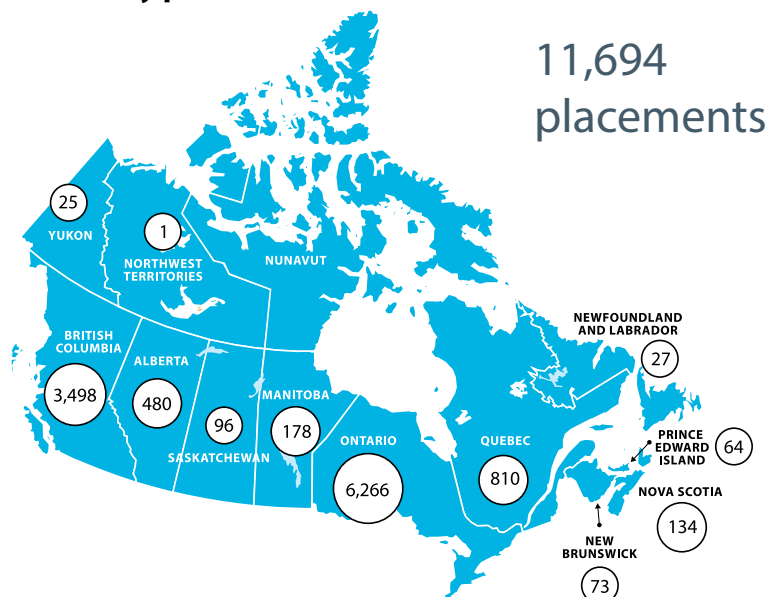
Healthcare	Bio-economy
3,922	7,332

Placements by bio-economy sub-sector†



† Placements may fit within multiple bio-economy sub-sectors

Placements by province



Student Work Placement program impact



"As a young medical startup, BioTalent Canada has been an essential resource when it comes to subsidizing the wages of great young talent. However, it is their availability and patience when helping us navigate government funding that really sets them apart."

– Richard Pietro, Skinopathy

"BioTalent Canada has helped SQI over the years to build strong connections with Universities in acquiring new talent and be able to address short term workflow pressures."

– Aurela Mehmeti, SQI Diagnostics Inc.

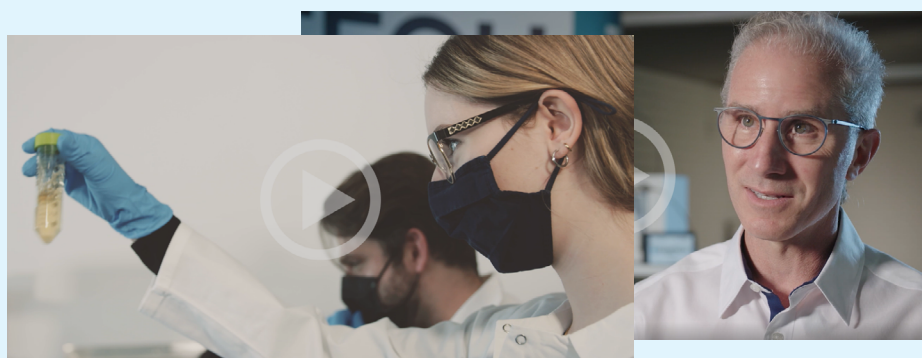
"It allowed us the opportunity to mentor, train, and encourage students interested in this industry and provide them with real world experience and exposure. It also helped us in solving technical challenges we had and bought a fresh insight whilst also adding value."

– Samra Asem, Genecis Bioindustries Inc.

"It has allowed our organization to hire fresh young talent that has helped boost our research and development department and the students bring in lots of creativity and new insights."

– Robert Jaam, Pathronix Corp.

Hear from students and employers themselves in our *Gaining a Competitive Edge* video series at youtube.com/BioTalentCanada



Featured academic partners



THE UNIVERSITY OF BRITISH COLUMBIA
Science Co-op Programs



UNIVERSITY OF
TORONTO



University
of Manitoba



Carleton
University
Faculty of Science



UNIVERSITY OF
WATERLOO



University
of Victoria



Queen's
UNIVERSITY
Pharmaceutical and Healthcare
Management and Innovation

Seneca
WORK INTEGRATED
LEARNING



DeGroote
SCHOOL OF BUSINESS
EDUCATION WITH PURPOSE



UNIVERSITY OF
TORONTO
SCARBOROUGH
ARTS &
SCIENCE CO-OP



Northeastern University
Toronto



CONTINUING
EDUCATION

LOYALIST
COLLEGE



EXPERIENTIAL
LEARNING HUB
CO-OPERATIVE EDUCATION



Master of Management
of Innovation
UNIVERSITY OF TORONTO

Western
hirewesternu



RED RIVER COLLEGE
Science Laboratory
Technology

Students from any Canadian post-secondary institution can participate

Funded in part by the Government of Canada's Student Work Placement Program. 